



Wireless life

User Manual



7/24 people support
+90 212 444 0239 (International)



Contents

AIRTIES DOCUMENTATION	1
AIRTIES AIR 2610	1
Manual Overview	1
Safety and Maintenance	1
INTRODUCTION	1
Main Features	2
Minimum System Requirements	2
Package Contents	2
Applications	2
STATUS LEDs	2
INSTALLATION SETTINGS	3
Loading the driver	3
Connecting to the Wireless Network	4
Connecting to the Wireless Network with AirTouch	5
Uninstalling the driver	5
DEVICE PROPERTIES	6
Technical Specifications	6
Physical Characteristics	6

AIRTIES DOCUMENTATION

AIRTIES AIR 2610

This manual has been prepared by AirTies Wireless Networks Corporation. All rights reserved.

Manual Overview

This manual guides you through the steps to set up and configure your AirTies device. Please read this manual carefully before beginning the installation process.

Damages that result from disregarding the instructions in this manual are not covered under warranty. AirTies is not responsible for damages or product failures under these circumstances.

The User Manual is an important resource where you can find information about the safe and proper use of your device. Please retain it for future reference.

Safety and Maintenance

- In order to prevent damage to your device prior to its use, keep it in its original box during transportation.
- If you encounter any problems, do not open or disassemble the device. Call AirTies Technical Support.
- To prevent electric shock, do not operate the device in wet or damp areas.
- In the event of a gas leak, do not power on your device.
- Avoid placing the device in dusty environments. If dust buildup occurs, remove the dust with a dry cloth.
- To clean the exterior of the device use a dry cloth. Do not attempt to clean the interior. There are no user serviceable

components inside.

- For detailed information about how to install and configure your device, consult the remainder of this manual.

INTRODUCTION

The Air 2610 brings wireless freedom to your desktop and laptop computers that do not have wireless capability. With the Air 2610 which uses 802.11ac technology, transfer data, watch videos or upload your pictures to the Internet wirelessly at speeds of up to 900 Mbps. Backward compatible with the wireless 802.11b/g/n devices, the Air 2610 provides 6 times faster wireless communications compared to earlier technologies.

Dead spots and packet losses on your wireless network becomes a thing of the past with the MIMO (Multiple Input Multiple Output) technology and the advanced error recovery system contained in the 802.11ac standard. MIMO technology can extend your wireless range up to 4 times.

You can get rid of the clutter of meters of cable that you have to use to connect your computers. Small enough to fit in your pocket, you can install the Air 2610 using the Easy Setup CD and use it anytime, anywhere you want. By connecting the Air 2610 to the USB port, you can bring wireless capability to even your old desktop or laptop PCs.

AirTies Air 2610 is compatible with all 802.11b/g/n/ac access points. It provides fast, uninterrupted data communications at wireless speeds of up to 900 Mbps and USB 2.0.

Easy to carry around, you can plug in the Air 2610 to your computer anywhere you like and enjoy the comfort of wireless connectivity.

Using the extension cable provided, you can position your device for best possible reception, thus increasing your access range.

Air 2610 supports the latest encryption standards enabling your computers to connect to the wireless network securely. Configuring

wireless security is fast and easy.

The Easy Setup CD and user manual make it easy to install and use the Air 2610 anywhere. All you need to do is to run the Easy Setup CD.

Main Features

- **Wireless communications at speeds of up to 900 Mbps with 802.11ac:** Data rates of up to 900 Mbps with 802.11ac compatible access points and routers. Backward compatible with 802.11b/g/n
- **MIMO:** Up to 4 times greater range with Multiple Input Multiple Output antenna architecture
- Much better broadcast quality with the **5 GHz support**
- **Easy installation:** Easy setup CD
- **Uninterrupted technical support:** 7/24 AirTies technical support line
- **Extended warranty:** 3 years

Minimum System Requirements

A computer that has an USB2.0 port and is running any of Win 2000/XP/Vista/7/8 operating systems.

Package Contents

1. AirTies Air 2610 900 Mbps 802.11ac Wireless USB Adapter
2. USB Extension Cable
3. Easy Setup CD
4. Quick Installation Guide
5. Warranty Card and Certificate of Compliance

Applications

At Home: Freedom to connect to the internet wirelessly from your chair, from any room in the house, or from your porch or garden.

In the Office: Access your company's wireless network from anywhere in the office, any conference room, the break room, etc.

Temporary local area networks (LANs) constructed for special projects.

Commercial fairs and shows, construction sites: places where a computer network needs to be setup in a very short time

A practical solution for those home office or small business users that need fast and easy network setup

STATUS LEDs

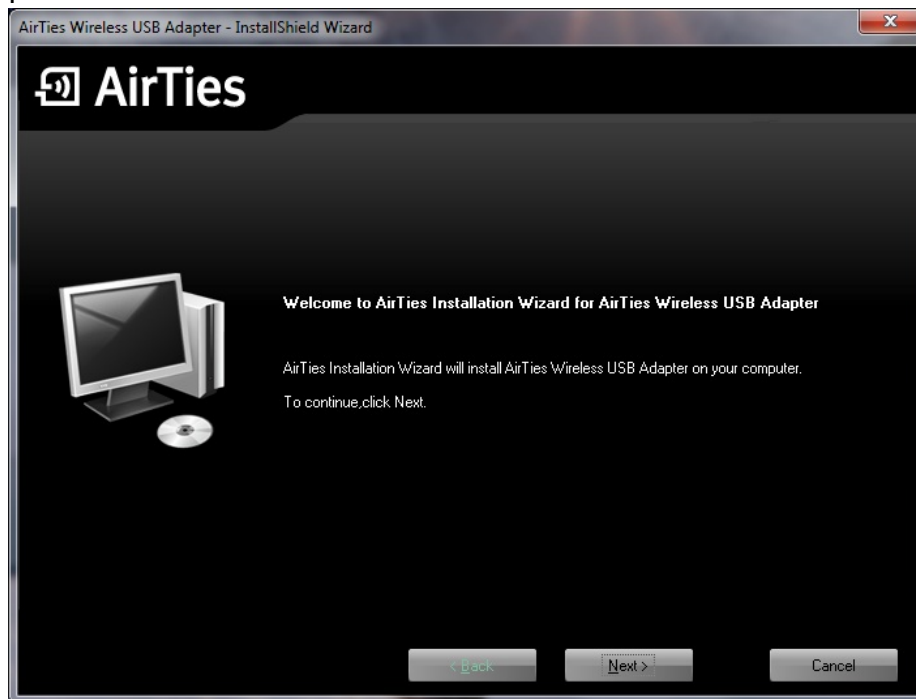
The following table describes the device activity that the LEDs indicate.

WIRELESS NETWORK STATUS	LIGHT STATUS
CONNECTED	ON
DISCONNECTED	OFF
DATA EXCHANGE	FLASHING

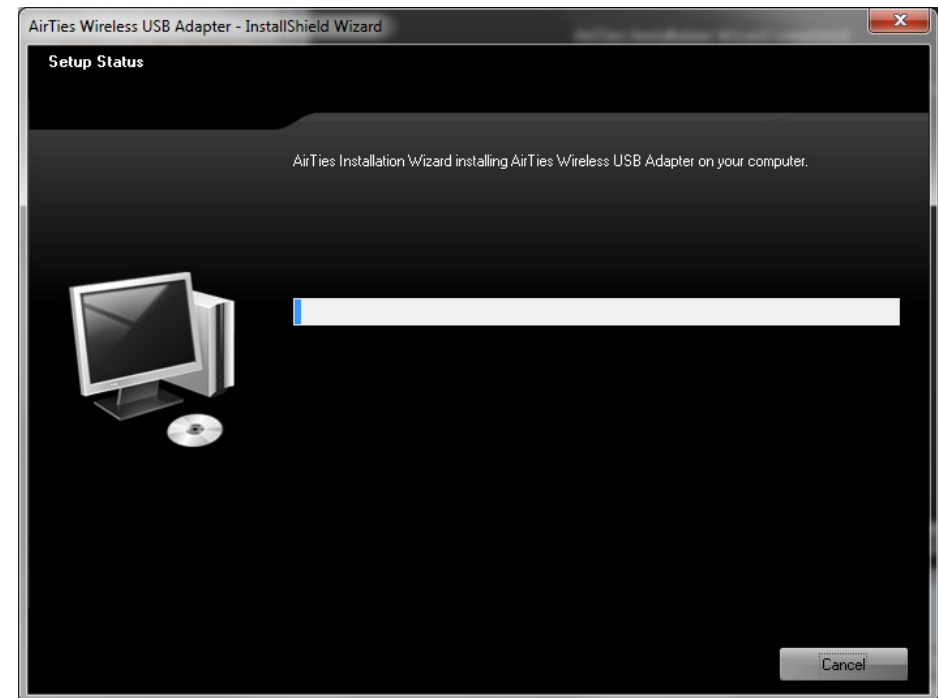
INSTALLATION SETTINGS

Loading the driver

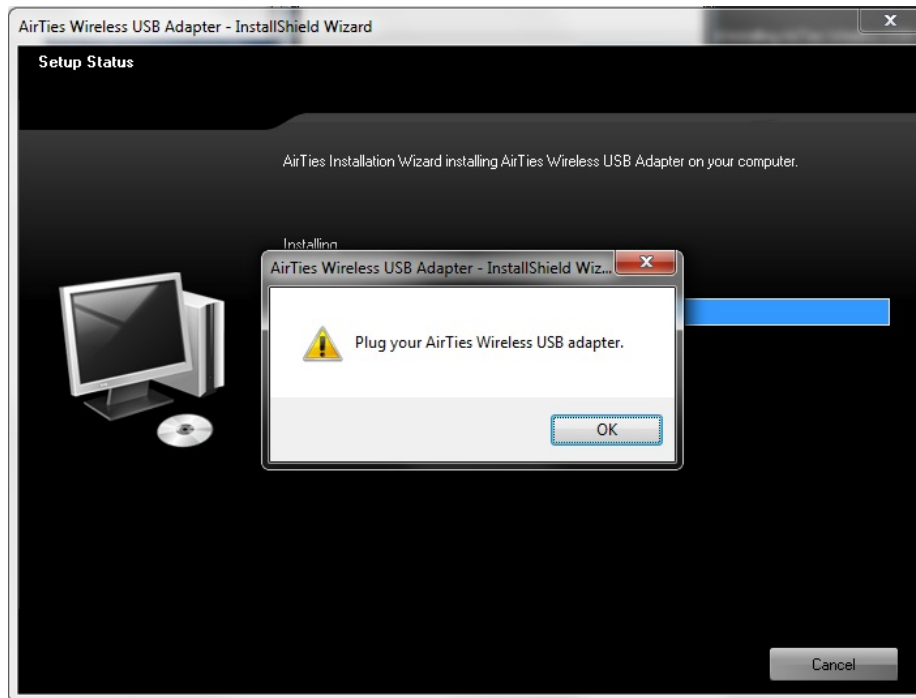
- Insert the CD provided into the CD drive of your computer. The InstallShield program will start automatically.
- Click **Next>** in the window that comes up to proceed with the installation.



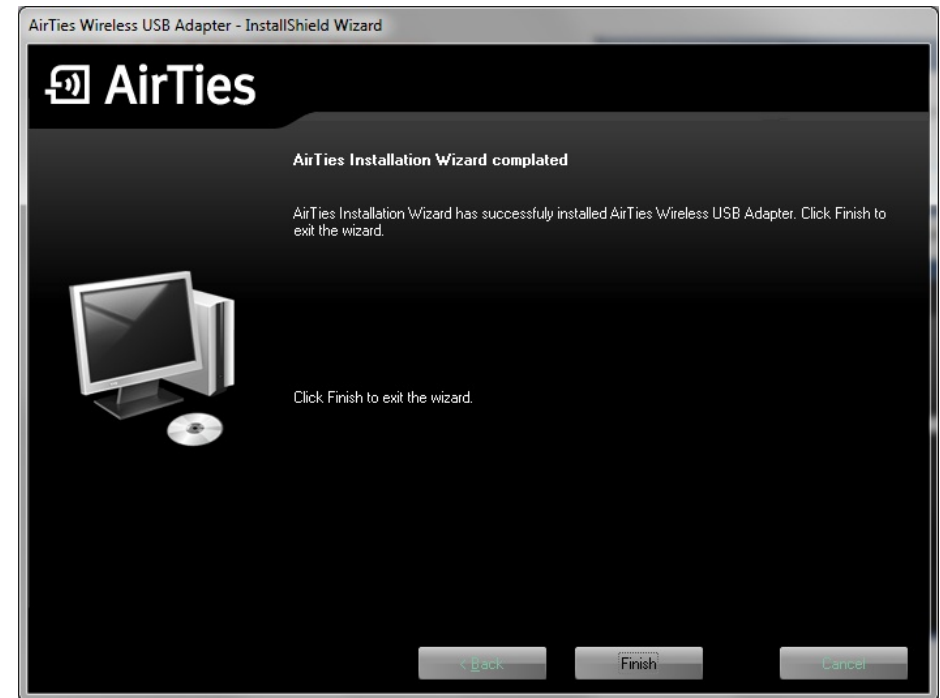
- The installation program will start to load the driver for the AirTies Wireless USB Adapter.



- This may take a few minutes. If you haven't connected the AirTies Wireless USB Adapter, then you will be asked to connect your adapter to the USB port. Click **OK** to resume the installation process.

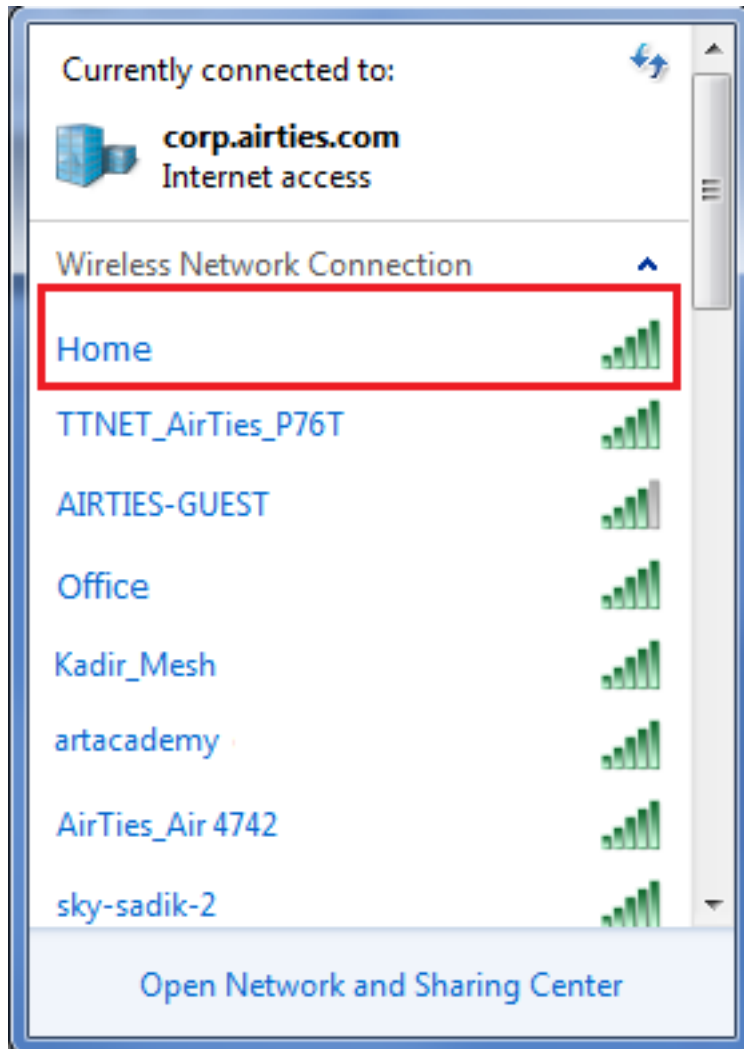


- When the driver installation is done, the following screen will come up. Click **Finish** to complete the installation.



Connecting to the Wireless Network

To connect to a wireless network using the AirTies Wireless USB adapter, you should open Wireless Network Connection and choose the network which you want to connect. If the wireless network you would like to connect to is a security enabled network, enter the network key and click **Connect**.



Connecting to the Wireless Network with AirTouch

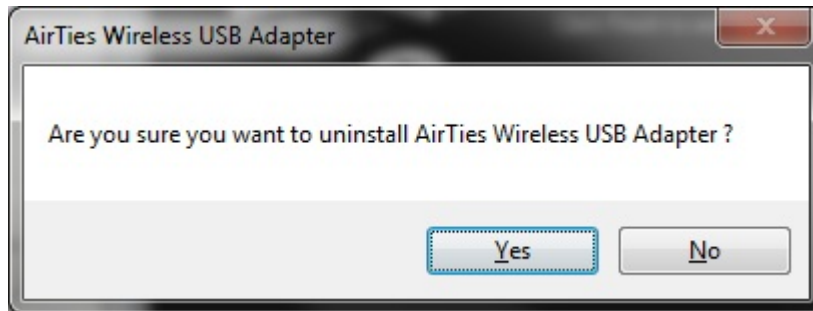
Follow the steps below for connecting a secure network:

- Firstly, push the AirTouch/WPS button on Access Point.
- Then, push WPS button on Air 2610.

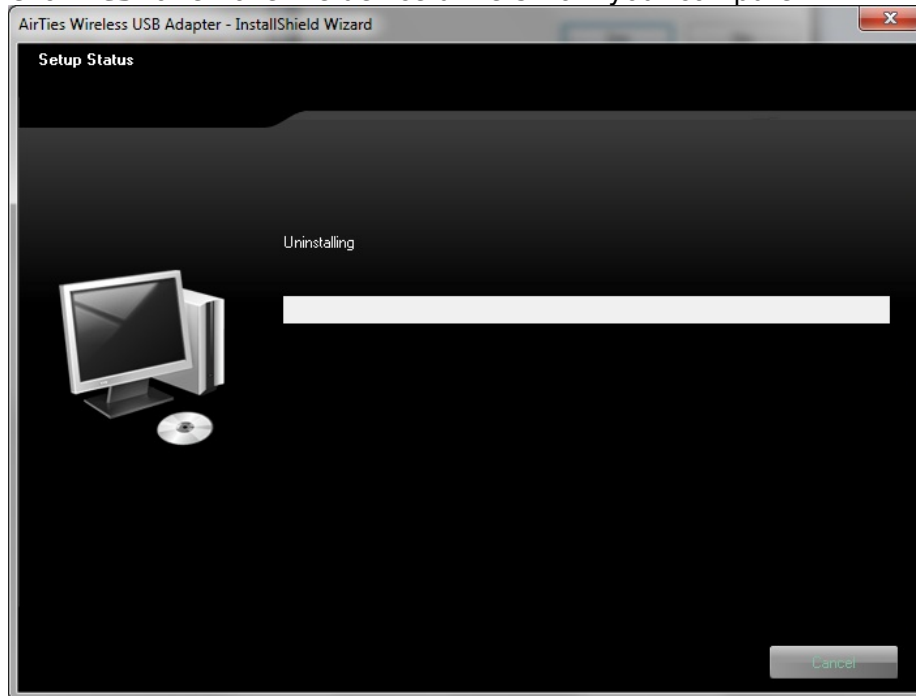


Uninstalling the driver

Go to **Start->Programs->AirTies**. Here, you will find the shortcut for uninstalling the driver for the AirTies USB adapter. When you click on this shortcut, the following screen will come up.



Click **Yes** to remove the device drivers from your computer.



DEVICE PROPERTIES

Technical Specifications

- Wireless Standards: IEEE 802.11ac, IEEE 802.11n, IEEE 802.11a, IEEE 802.11g, IEEE 802.11b
- Frequency Interval: 5.18~5.32 GHz - 5.5~5.7 GHz
- Maximum Transmit Power: 16 dBm EIRP
- Wireless activity LED
- Wireless Security: WPA2, WPA, WEP, and 802.1x support
- Modulation Type: DBPSK/ DQPSK/ CCK/ OFDM/ 16-QAM/ 64-QAM/ 256-QAM
- Low Power Consumption Mode
- WMM (Wireless Multi Media) support
- DPT (Direct Packet Transmission) feature: full speed data exchange between clients without an access point
- Roaming
- Class 2 device

Physical Characteristics

- Power: Over USB port
- Operating Temperatures: 0 C ~ 40 C
- Storage Temperature: -40 C ~ 70 C
- Humidity: %5 ~ %90 non-condensing